

## Plastic & Wire Loks



- Seal is made of a tough plastic body and wire hasp.

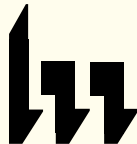
Code No.	Type	Color
PWR-6	Num	blue, black, green, red, white and yellow

## Posigrip Bag Seals



- The internal metal locking mechanism provides a strong seal.

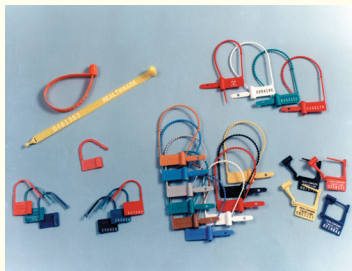
Code No.	Type	Color
0353	Num	white and yellow



healthmark  
INDUSTRIES CO.  
health care products

800-521-6224  
www.hmark.com

## Tamper Evident Seals



LOCK-GUIDE 7-2011

## Twist-Loks

- The new Twist-Lok may be the easiest lock to break.
- Pull on it - it breaks. Twist it - it breaks. Snap it at the score - it breaks



Code No.	Type	Color
5224	Num	blue, black, green, orange, lavender, white and yellow

## Snap-Loks

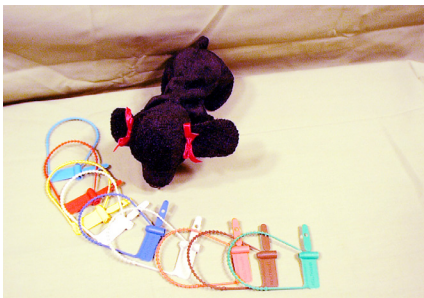
- This is the original plastic breakaway seal; the first to provide tamper evidence and be breakable by hand.



Code No.	Type	Color
7525	Unnum	red, blue, green
8050	Num	red, blue, green, yellow

## Cynch-Loks

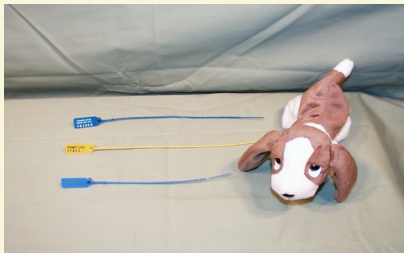
- These locks can be pulled to varied degrees of tightness.
- To break, simply tug and twist at the lock barrel.



Code No.	Type	Color
6020	Unnum	red, dark blue, green, yellow white
6323	Num	red, green, white, black

## Pull-Tight Loks

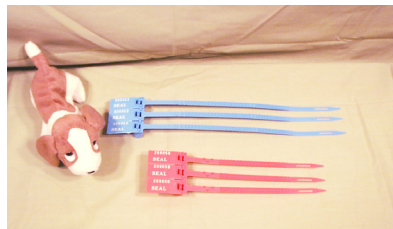
- These locks can be pulled to varied degrees of tightness.
- They are ideal when a tight-fitting seal is required.



Code No.	Type	Color
9393	Num	blue, green, yellow white, red, white
5030	Unnum	blue, green, yellow white, red, white

## Long Cynch Loks

- The cynch design of these locks means they can be used in a wide variety of situations.
- Available in 3 sizes.



Code No.	Type	Color
927-15	Num	blue
927-07	Num	yellow
927-11	Num	blue

## Econo Locs

- Inexpensive with a traditional hasp-style lock, these seals.
- Choose from unnumbered or numbered.



Code No.	Type	Color
7050	Unnum	red, green
7050N	Num	green, red