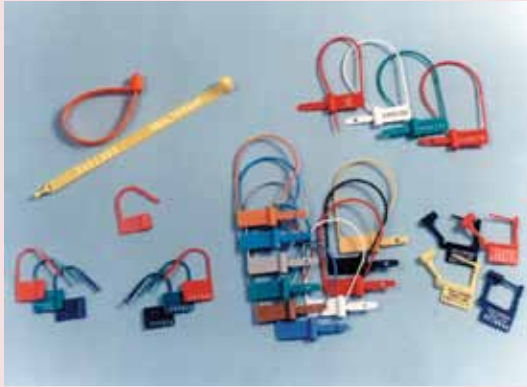




SECURITY PRODUCTS GALORE

A complete line of products for the security and use control of emergency supplies, equipment, pharmaceuticals and other items requiring tamper evidency and use-control



Tamper Evident Locks
Page 2



Tamper Evident Tape
Page 4



Key Locking Cabinets
Page 4



Hard-Sided Emergency Boxes
Page 5



Soft-Sided Emergency Cases
Page 7



Crash Carts & Accessories
Page 8



TAMPER EVIDENT SEALS



Snap-Loks

This is the original plastic breakaway seal; the first to provide tamper evidence and be breakable by hand. The numbered locks have unique numbers. 100 per box.

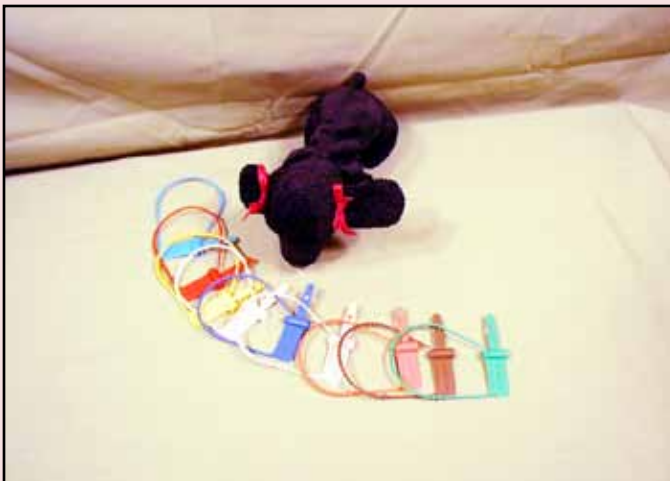
Code#	Type	Color
7525	Unnum	red, blue, green
8050	Num	red, blue, green, yellow



Twist-Loks

The new Twist-Lok may be the easiest lock to break. Pull on it - it breaks. Twist it - it breaks. Snap it at the score - it breaks. Twist-Loks come standard with numbers and are available in seven different colors.

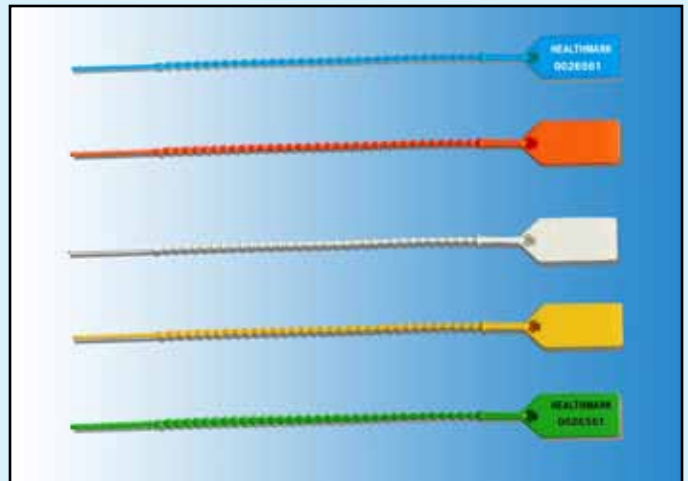
Code#	Type	Color
5224	Num	red, black, lavender, yellow, green, blue, orange



Cynch-Loks

These locks can be pulled to varied degrees of tightness. To break, simply tug and twist at the lock barrel. Available in a rainbow of colors.

Code#	Type	Color
6020	Unnum	red, green, yellow, white, dark blue
6323	Num	white, red, green, black



Pull-Tight Loks

These locks can be pulled to varied degrees of tightness. They are ideal when a tight-fitting seal is required.

Code#	Type	Color
9393	Num	blue, yellow, green, red, white
5030	Unnum	blue, green, red, white, yellow

TAMPER EVIDENT SEALS



Loop-Loks

These long locks are ideal when a long seal is needed. They seal quickly and easily. They are also easy to open with a tug. All Loop-Loks are numbered. They are available in orange and yellow.

Code#	Type	Color
9075	Num	orange, yellow



Long Cynch-Loks

The cynch design of these locks means they can be used in a wide variety of situations. Available in 3 sizes. Locks are sequentially numbered.

Code#	Type	Color
927-15	Num	blue
927-07	Num	yellow
927-11	Num	blue



Econo-Loks

Inexpensive with a traditional hasp-style lock, these seals are an exceptional value. Choose from unnumbered or numbered.

Code#	Type	Color
7050	Unnum	red, green
7050N	Num	green, red



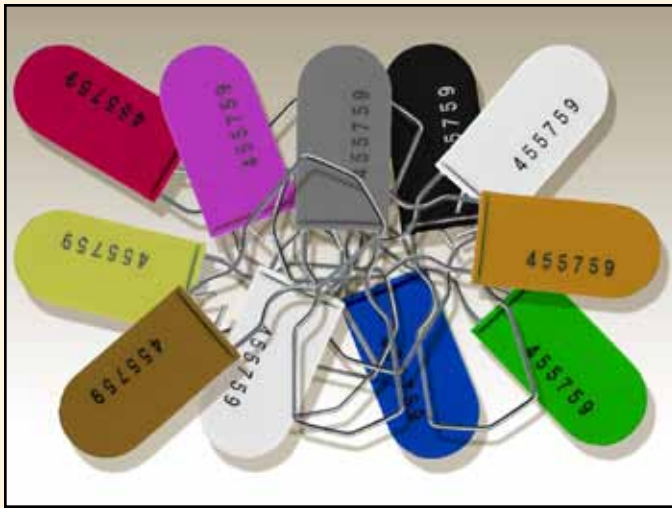
Posigrip Bag Seals

The ultimate for any bag requiring a secure seal. The internal metal locking mechanism provides a strong seal. An easy tear-off feature allows for one hand removal.

Code#	Type	Color
0353	Num	yellow, white



TAMPER EVIDENT SEALS & LOCKING CABINET



Plastic & Wire Loks

Seal is made of a tough plastic body and wire hasp. Hasp is available in 2 sizes. Unique sequential numbers. Write-on panel available on one or two sides.

Code#	Type	Color
PWR-6	Num	blue, black, green, orange, red, white, yellow



Tamper Evident Tape

Identify contents as "secured" for special or limited access. When the tape is torn, it reveals the "void opened" printing indicating that contents have been tampered with and may need to be check and re-inventoried.

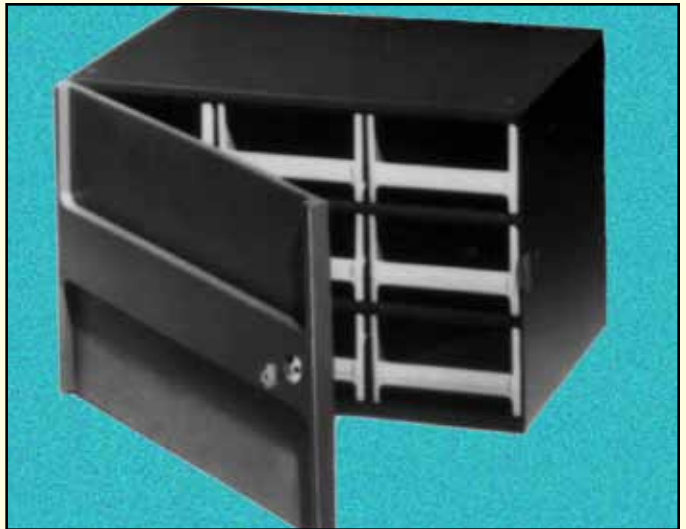
Code#	Width	Length	Qty
TEL-1400R	1.000	4.000	RL-325



Easy Open Pull-Tight Loks

The easy to apply, easy to remove security seal. Pull-tight style with special easy to break tear-off rod. Available in red and uniquely numbered. 7-7/8" long.

Code#	Type	Color
0345 RED	Num	red, white



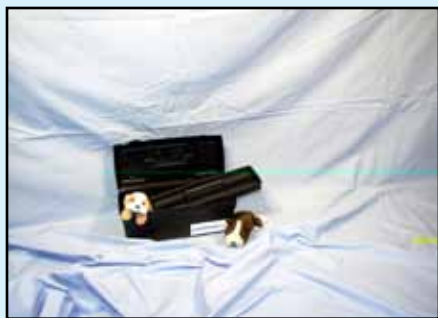
Locking Cabinet & Bins

Keep supplies secure and organized in this cabinet. All steel construction provides security. Sliding bins help organize supplies. Available in Black. Includes nine front bins.

Code No.	Description	Length	Width	Height
19-109	Cabinet with 9 Bins	17.000	11.000	11.000

Call:800-521-6224 • Fax:586-491-2113 • www.HMARK.com

EMERGENCY MED BOXES & CASES



1310-2

Our smallest and most economical Box. Med Box style with lift-out tray. 2 compartments. Color - Black

Code No.	Length	Width	Height
1310-2	13.000	6.000	5.625



1410-2

Med Box style with lift-out tray. 2 compartments. Colors - Red and Grey.

Code No.	Length	Width	Height
1410-2	14.500	7.500	5.250



1610-2

Med Box style with lift-out tray. 2 compartments. Color - Red and Grey.

Code No.	Length	Width	Height
1610-2	16.625	8.625	7.000



2010-2

Med Box style with lift-out tray. 2 compartments. Color - Grey

Code No.	Length	Width	Height
2010-2	19.875	8.875	8.375



2310-2

Med Box style with lift-out tray. 2 compartments. Color - Grey

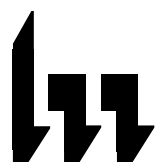
Code No.	Length	Width	Height
2310-2	23.000	10.500	11.375



2710-2

Med Box style with lift-out tray. 2 compartments. Colors - Grey and Orange.

Code No.	Length	Width	Height
2710-2	27.500	13.375	14.000



healthmark
INDUSTRIES CO.
health care products

33671 Doreka
Fraser, MI 48026



1611-2

Med Case style with cantilever pop-up tray. 7 compartments. Colors - Grey and Orange.

Code No.	Length	Width	Height
1611-2	16.500	8.750	7.500



1711-2

Med Case style with cantilever pop-up tray. 9 compartments. Colors - Grey and Orange.

Code No.	Length	Width	Height
1711-2	17.625	10.250	8.375

Call: 800-521-6224

Fax: 586-491-2113

www.HMARK.com



MED CASES, CHESTS & VAULTRAYS



1910-2

Med Case style with cantilever pop-up tray. Lockable with a breakaway tamper evident seal..

Code No.	Type	Length	Width	Height
1910-2	11 compartments, color - orange	19.000	10.750	10.125



1960-2

Med Case style with cantilever pop-up tray. Lockable with a breakaway tamper evident seal.

Code No.	Type	Length	Width	Height
1960-2	36 compartments, color - grey	18.500	10.750	10.375



8040-2

Med Chest style with removeable drawers. Customize layout w/ adjustable dividers. Lockable style.

Code No.	Type	Length	Width	Height
8040-2	color - orange	20.500	12.000	14.500



Security Drug Cases

Made of high impact plastic. Includes removeable foam padding.

Code No.	Type	Length	Width	Height
6780-1	color - black	12.000	8.000	2.625
6780-2	color - black	14.000	11.000	3.250



2230-2

Available in grey. Med Chest style with pull-out drawers. Lockable with a breakaway tamper evident seal.

Code No.	Type	Length	Width	Height
2230-2	13 compartments, color - grey	19.500	11.500	11.750



2260-2

Available in grey. Med Chest style with pull-out drawers. Lockable with a breakaway tamper evident seal.

Code No.	Type	Length	Width	Height
2260-2	31 compartments, color - grey	19.500	10.375	15.000



Lockable Vaultrays in Many Sizes

Available in 8 standard and many custom sizes, Vaultrays give you closed, use-controlled storage of supplies. Supplies for a single emergency situation are stored inside the hinged cover and closed with a disposable lock. Made of tough ABS plastic. Clear or Opaque covers are available. Accessories include dividers and label holders.

Code No.	Type	Length	Width	Height
300-4VTC	Lockable Vaultray - Clear Cover	16.375	10.875	4.000
16-4VTC	Lockable Vaultray - Clear Cover	17.750	5.500	4.000
25-4VTC	Lockable Vaultray - Clear Cover	17.750	8.125	4.000
50-7VTC	Lockable Vaultray - Clear Cover	17.750	16.375	7.000
400-8VTC	Lockable Vaultray - Clear Cover	22.375	17.500	8.000
400-11VTC	Lockable Vaultray - Clear Cover	22.375	17.500	11.000
300-4VTO	Lockable Vaultray - Opaque Cover	16.375	10.875	4.000
400-4VTO	Lockable Vaultray - Opaque Cover	22.375	17.500	4.000
400-8VTO	Lockable Vaultray - Opaque Cover	22.375	17.500	8.000
400-11VTO	Lockable Vaultray - Opaque Cover	22.375	17.500	11.000

SOFT-SIDED CASES



Large & Small Duffel

An easy to carry, multi-compartment case with inside pockets, outside pockets, and numerous elastic hold-downs. Large size has removable padded insert to hold "D" size tank.

Code No.	Length	Width	Height	Color
911-82111	18.000	13.250	12.000	red
911-82211	28.000	15.000	11.000	red



ALS Case

This case features a separate compartment to hold the intubation kit (see #911-82911) the remaining area is split up into 5 compartments. 5 zippered pockets on front.

Code No.	Length	Width	Height	Color
ALS CASE	17.500	13.000	13.250	red



BLS Case

This case can outfit everything required for BLS. The main compartment has 4 clear color-coded zippered pouches and flat storage areas. 5 outside zippered pockets.

Code No.	Length	Width	Height	Color
911-82511	13.500	11.000	15.000	red



First Responders

These are sturdy semi-rigid cases; each has a 2-sectioned main compartment with flat storage pocket. 2 side-release buckles fasten front flap to body of case. Zippered pouch on inside of lid; 2 outside side pockets.

Code No.	Length	Width	Height	Color
911-83411	18.000	6.000	10.500	red



EMS Urban Back Pack

The load is on your back; your hands are free. Features main compartment with 6 clear color-coded zip pouches. 2 outside pockets each have 8 elastic hold-downs. Adjustable padded straps and 2 leather carry handles.

Code No.	Length	Width	Height	Color
911-83311	11.000	8.000	20.000	red



Burn Duffel

A simple round duffel made of coated vinyl fabric and web handles. For storage of your fire blankets and other burn therapy products.

Code No.	Length	Width	Height	Color
911-82736	18.000	9.250		yellow



Oxygen Duffel

Designed for an ambulance company to provide extra protection for regulator. 0.5" foam padding, four inside pockets for tubing and supplies.

Code No.	Length	Width	Height	Color
911-84414	21.500	8.000		green



healthmark
INDUSTRIES CO.
health care products

33671 Doreka
Fraser, MI 48026

Call: 800-521-6224

• Fax: 586-491-2113

• www.HMARK.com



SOFT-SIDED CASES & CRASH CART BOX



Trauma Cases

A ruck-sack style bag that features 3 sectioned main compartment and front pocket covered by a flap with Velcro closure. Numerous elastic loops and 2 piggy-back zippered side pockets.

Code No.	Length	Width	Height	Color
911-82311	20.250	7.000	11.250	red
911-82411	17.000	11.500	7.250	red



Intubation Case

Used in conjunction with the ALS Case or as a stand-alone case. Five clear vinyl zippered pockets allow quick and easy access to laryngoscopes and other supplies.

Code No.	Length	Width	Height	Color
911-82911	17.500	8.000	5.500	red



Fanny Pack

The main compartment is separated into two smaller zippered areas. Flat outside pockets with Velcro closure specifically for Paramedic shears and flashlight.

Code No.	Length	Width	Height	Color
911-82611	10.500	5.500	4.250	black, red, blue, green



Swap & Go Crash Cart Box

Instantly restock your crash cart while organizing and standardizing drawer layout....

SAVE TIME- When code occurs, instantly restock cart by retrieving fully stocked and sealed Swap & Go Box from the shelf and exchange with used box from Crash Cart.

SAVE STAFF- Midnight codes will no longer interrupt pharmacists from crucial duties to restock a used crash cart. They can swap boxes and go right back to work. The used Swap & Go can be restocked when time permits.

SAVE MONEY- Exchange Boxes and accessories from Healthmark are the best value on the market.

ENHANCE SECURITY- Lockable tops and self-seal bags with center perforations are available to secure contents and provide another level of tamper evidency.

Code No.	Description	Length	Width	Height	Qty
400-2CC	Full Drawer Box	22.00	16.00	2.50	1
421	Slotted Divider	17.50		2.88	1
422	Slotted Divider	22.38		2.88	1
2029	Self Seal Security Bag	20.00	29.00		20
FCM	Foam Cushion Mat	22.00	16.00		1

Code No.	Description	Length	Width	Height	Qty
300-2CC	Half Drawer Box	10.88	16.38	2.25	1
321	Slotted Divider	10.88		1.88	1
322	Slotted Divider	16.38		1.88	1
1422	Self Seal Security Bag	14.00	22.00	0.00	20

Call:800-521-6224 • Fax:586-491-2113 • www.HMARK.com