

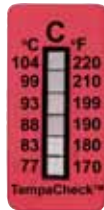
ProFormance™ Monitoring Products



AAMI and AORN recommend at least weekly testing of the cleaning process. Comply with these standards by utilizing ProFormance™ monitoring tools. Individually and as part of complete kits, the ProFormance™ line of products provide an objective test of cleaning methods that are clearly visible and easy to interpret. Most conveniently, our test kits are prepackaged with the appropriate tools for your specific cleaning equipment, including a comprehensive guide for inspecting and documenting your equipment's performance. Make Clean Seen with ProFormance™.



Water Quality



Temperature Monitor



Cart Washer



Sonic Cleaning



Washer-Disinfecter



Lumen Washer



Flexible Scope Washer



Residual Soils



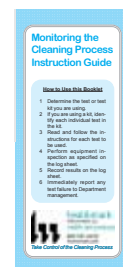
Surface Cleanliness



Endoscopes



Robotic Arms



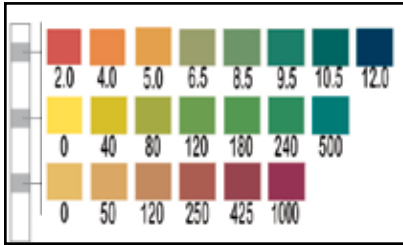
Test Kits

See the Quality of Water with AquaTest™ 3-in-1 Water Quality Test Strips

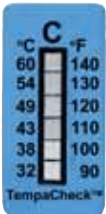
Water quality is key to the performance of chemical cleaning agents. In particular, hard water binds up detergent molecules, preventing them from breaking down the contaminants. Further, these molecules are often a source of staining and pitting of surgical instruments. Enzymes used in enzymatic detergent are highly influenced by the pH level of water. An improper pH level can lead to the partial or complete inactivation of the enzymes relied upon to breakdown the soil on instruments. Total alkalinity measures the amount of alkaline buffers in water. These alkaline substances buffer the water against sudden changes in pH. Total alkalinity is the key to maintaining water's balance.



Can you see water quality? With the AquaTest™ strip you can. In less than 30 seconds, this simple to use test shows you all three key water quality statistics: pH, Alkalinity and Hardness. With the easy to interpret color change these values can be measured and recorded for the thorough documentation of water quality. Hardness is measured from soft (0) to very hard (1000 ppm CaCO₃). pH is measured from very acid (2) to very alkaline (12), encompassing the optimum range for enzyme cleaners. AquaTest™ reports Total Alkalinity from 0 to a high level (500ppm CaCO₃).



Visualize the Temperature with TempaChek™

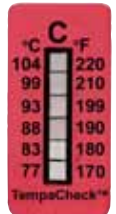


TEMP-90

Water temperature is a key to cleaning performance. In general, the warmer the water, the more effective the cleaning action. However, with each method and at each stage of cleaning, it is important that the water not exceed a certain temperature.

ENZYME SOLUTION: When presoaking instruments in an enzyme cleaner or when using an enzyme solution in an ultrasonic cleaner, instructions typically call for the use of "warm water." But define warm water? In general, enzyme cleaners used for this purpose have an optimal temperature range of 90°F to 120°F. Above 140°F, most of these enzymes are completely deactivated. Temp-90 is a simple method for verifying and documenting the temperature. The Temp-LC is a liquid crystal thermometer that can be mounted to the side of the bath, below the water line. This inexpensive and reusable thermometer will display the real time temperature of the bath, providing valuable feedback about the appropriateness of the bath temperature when compared to the temperature recommended by the detergent manufacturer

AUTOMATED WASHERS: When using an Automated Instrument Washer, the initial rinse water should not exceed 45°C (113°F) and it is suggested temperatures remain significantly below this level. At 45°C, blood is cooked on to instruments and becomes highly insolvent - making removal very difficult. Water temperature is also the key source of thermal disinfection. TempaChek-170 provides a permanent and independent measure of the surface temperature achieved.



TEMP-170

Order# Temp-LC



Mark the Cleaning Reach of your Cart Washer with CartWashCheck™



Order# CW-101



Cart washers are important tools in the overall effort to reduce cross contamination. Often they are used to clean not just surgical case carts, but also basins, instrument trays, wheel chairs and other supply and patient transport equipment. The CartWashCheck™ is designed to challenge the mechanical efficiency of the cart washer. These convenient tests can be quickly and easily adhered to any metal surface with the peel off adhesive back. Place these tests on surfaces that are furthest from the washer jets or in areas where coverage is the most difficult. The dark blue square should wash, leaving a white square. This demonstrates that water is reaching the area tested and indicates proper mechanical action. Further, the test reports common maximum temperature levels cart washers are programmed to reach: 120°F, 150°F & 180°F. The irreversible thermometer reports the highest temperature reached during the cycle.

Observe the Inside-Out with LumCheck™ and FlexiCheck™



Order# WLC-101

LumCheck™ is the first test designed as an independent check on the cleaning performance of rigid scope cleaners. The LumCheck™ is made up of three key components: The test soil, the stainless steel plate and the LumCheck™ holder.

The soil is composed of blood components mixed and applied in a precise manufacturing process. As a result, it provides a consistent challenge to the cleaning effectiveness of the MIS cleaning device. The stainless steel plate is “scratched,” replicating the uneven interior of lumen instruments. The holder enables the attachment of the test to the cleaning equipment and also replicates the cleaning challenge of cannulated instruments.

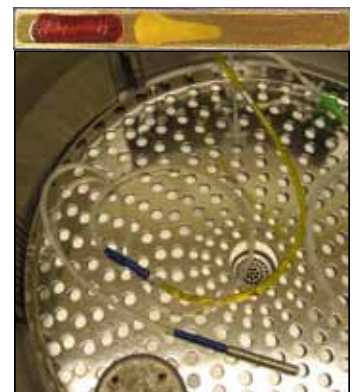


WLC-102 Test in Holder

After running the LumCheck™ test through a cleaning cycle, remove the test from the holder. Examine the stainless steel plate for the presence of soil. The LumCheck™ should be visually clean. LumCheck™ complies with ASTM Guide D7225.

Order# FLEXCHK-101

The FlexiCheck™ is a three part kit that simulates a flexible endoscope channel and is designed to challenge the cleaning efficiency of endoscope washers. The kit includes a flexible tube, attached to a stainless steel lumen device. The test coupon is placed in the lumen and the entire device is hooked up to the irrigation port of the washer. The test coupon includes two soils, components of blood soil and polysaccharide soil. These soils are the types which are often found within the channels of flexible endoscopes and represent a significant cleaning challenge. When processed through a cleaning cycle, the endoscope washer should completely remove both soils from the test coupon.



Order# FLEXCHK-102

Make the Invisible, Visible with SonoCheck™



Order# TI-108

It is invisible to the human eye, but with the SonoCheck™ you can test for the presence of cavitation energy - the cleaning power - of your ultrasonic cleaner.

Ultrasonic cleaning is a result of sound waves introduced into a cleaning liquid by a series of transducers. The sound travels throughout the tank and creates waves of compression and expansion. During the expansion wave, molecules of the liquid are pulled dramatically, ripping them apart. This creates microscopic vacuum cavities. As the pressure around these cavities becomes greater, they collapse violently, forming voids - a process called cavitation. This creates extreme

temperature and combines with the velocity of the liquid jet to deliver a very intense cleaning action in a minute area.

When the ultrasonic cleaner is supplying sufficient energy and conditions are correct, SonoCheck™ will change color. Problems such as insufficient energy, overloading, water level, improper temperature and degassing will increase the time needed for the color change. In the case of major problems the SonoCheck™ will not change color at all.



Reveal the Hidden Areas of Surgical Instruments with the TOSI™ Instrument Washer Test

Order# WT-101



Before

Reveal the hidden areas of instruments with the TOSI™ washer test, the easy to use blood soil device that directly correlates to the cleaning challenge of surgical instruments. TOSI™ is the first device to provide a consistent, repeatable, and reliable method for evaluating the cleaning effectiveness of the automated instrument washer.



Fibrin

This is possible, because the blood soil is manufactured to exacting specifications each and every time. When metered on to the stainless steel plate, the TOSI™ is completely analogous to a stainless steel instrument soiled with dried blood. Placed in the see-through plastic holder, the challenge is identical to the areas of instruments typically hidden from view (i.e., box locks).



Hemoglobin

The routine use of this test will help insure that your instrument washer is performing at a consistent level, enhancing the routine visual inspection of instruments. TOSI™ complies with new AAMI and AORN Guidelines as well as ASTM Guide D7225.



Pass



Test Beyond What Can Be Seen with HemoCheck™



Order# HC-101

Stains come in all sizes, shapes and intensity. Sometimes a stain can appear quite benign, or not be easily detected by the human eye. Go beyond what you can see and test the cleanliness of instruments with the HemoCheck™ blood detection kit.

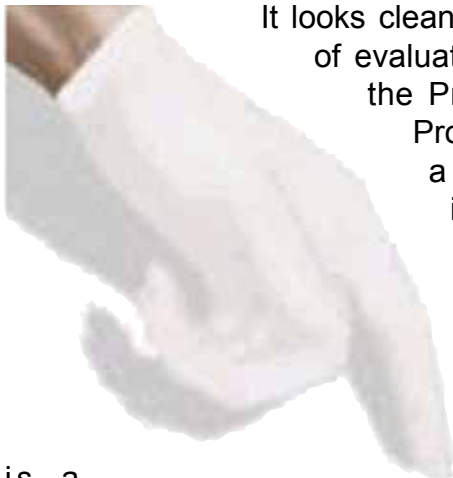
Finding a stain on an instrument that has gone through reprocessing is never good. If the stain is blood, the implications are even more serious. Take the guess work out of evaluating the cleanliness of instruments with the HemoCheck™ blood residue test kit. The HemoCheck™ is an all-in-one test, provides a result in 30 seconds, is simple to interpret and indicates blood residue down to 0.1 µg. Significant traces of blood indicate an inadequately reprocessed instrument and is a rich source for cross contamination.

To use the HemoCheck™, simply swipe the surface of the instrument, drop the swab in the activated indicator, shake vigorously, wait for 30 seconds and check for color change. If the swab remains yellow, the instrument is free of blood. If any area of the swab turns green or blue, the surface harbors blood residue and should be reprocessed. If many instruments are found to be soiled, a thorough evaluation of the decontamination processes should be conducted. HemoCheck™ complies with ASTM Guide D7225.

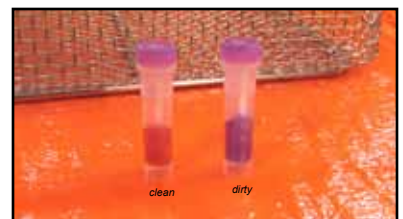


Expose Contaminants on Surfaces with ProChek-II™

Order# PT-202



It looks clean. But is it? Take the guess work out of evaluating the cleanliness of surfaces with the ProChek-II™ protein swab test. The ProChek-II™ is simple to use, provides a rapid result, is an all-in-one test, and is easy to interpret. The ProChek-II™ measures for residual protein on surfaces. Protein is a significant component of bioburden. Traces of protein indicate an unclean surface and a likely source of cross contamination. A successful test documented record of a properly cleaned surface. To use the ProChek-II™, moisten the tip with sterile water, swab the surface of the item being tested, drop the swab in the vial and shake vigorously. If the color of the liquid remains brown, the surface is demonstrably clean. If the liquid or any part of swab turns purple, the surface harbors protein and should be re-cleaned. The test is sensitive to 1 µg of protein.



is a
cleaned

moisten the tip with sterile

being tested, drop the swab in the vial and shake vigorously. If the color of the liquid remains brown, the surface is demonstrably clean. If the liquid or any part of swab turns purple, the surface harbors protein and should be re-cleaned. The test is sensitive to 1 µg of protein.

See Clean Inside a Scope with EndoCheck™

Flexible endoscopes are notoriously difficult to clean. More difficult still is verifying that the cleaning has been adequate. Now there is a test for checking the cleanliness of the biopsy channel of the flexible endoscope. The EndoCheck™ is a miniature chemistry kit that is simple to use and interpret. Simply swab the biopsy channel of the scope with the included soft-tipped long probe, clip off the swab into the vial. Mix the activating agent, shake vigorously, wait and then check for a



Depending on the type of test used, a color change

indicates that blood residue or protein residue remains in the channel, and should be reprocessed. EndoCheck™ complies with ASTM Guide D7225. Swab diameter sizes from 1.0 - 5.0 mm are available.



Identify the Presence of Residual Organic Soils with ChannelCheck™



US Patent #6,447,990 B1

ChannelCheck™ is the first product capable of testing virtually any lumened instrument for residual organic soils, including flexible endoscopes, no matter the channel size.

ChannelCheck™ tests for three common organic soils at once: blood, protein and carbohydrates.

Simply flush an individual channel with sterile-DI water and recover that water in a clean (preferably sterile) container. Then dip and swish the test strip in the recovered water for 10 seconds.



Remove the strip, wait 90 seconds and then compare the color of the pads to the results chart. Should any of the pads indicate there is residual soil, reclean the device and then retest.

Order# UCC-101

Check that the Scope in the Closet Safe



Flexible endoscopes are marvelous diagnostic tools. But as we all know, they are a challenge to clean and disinfect/sterilize. Modern machines such as AER's are effective tools for rendering scopes safe for use on the next patient.

But what about the endoscope that is not used for multiple days? Is that scope hanging in the closet still safe for use? Well Healthmark has developed a tool kit to help out: the HangTimeKit™.



Order# 403225 HANGTIME

The first step in managing scope storage is to know when they were last reprocessed. For that purpose, the kit includes HTKLabels. Each label is imprinted with the 12 months and with the number 1 - 31, representing the possible 31 days in a month. Simply circle the month and date

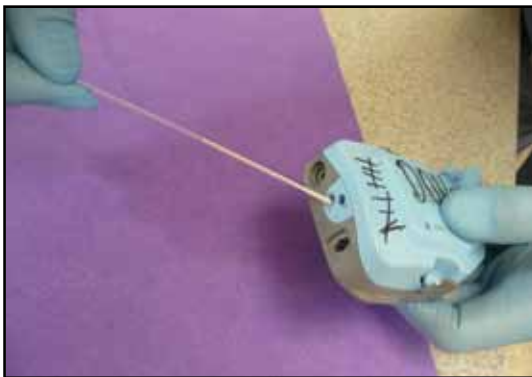
when the scope is reprocessed and wrap the tag on the scope with the self looping design. When the scope is next used, note the date of last reprocessing in your records.

Order# HTK-1



What about a scope that has been stored for more than a couple of days? Is it still safe? For that, the kit includes the HTKTest. This simple and rapid test checks for gram negative bacteria that might have grown out during storage. Utilizing a unique enzyme detection method, the easy to read fluorometer checks for possible colony formation by reading telltale florescence in the recaptured water. If the fluorometer reading is positive for gram negative bacteria, reprocess the endoscope following manufacturer guidelines prior to use.

Inspect the Cleanliness of Robotic Arms with the RAC Test Kit



With the RoboticArmCheck™ (RAC) confirm the proper cleaning of surgical robotic arms. These high tech pieces of equipment have a limited use life. Improper cleaning can lead to the build-up of bioburden inside of the instrument - representing not only a source of cross-contamination to patients, but shortening the useful life of the instrument itself. The RoboticArmCheck™ is an easy to use and interpret method for testing these instruments, providing a result in less than 30

seconds. Sample the inside of the robotic arm with a moistened swab, and expose the swab to a simple reagent test. A color change to green/blue indicates that blood remained in the lumen of the instrument, requiring recleaning. No color change indicates the instrument is clean and is ready for the next step in reprocessing.



Order# RAC-001

Documented Proof of Washer Performance from a Leading International Testing Lab



Order# CRLE-001

Want to take your cleaning verification to the next level? Subscribe to this testing service for an independent scientific analysis of your instrument washers. The procedure is based upon the testing prescribed in the German Guidelines for Validation and Routine Monitoring of Automated Cleaning and Disinfection Processes. Crile forceps are contaminated with sterile bovine blood in the box locks area, for a real world challenge to cleaning. Place in the washer as a normal instrument load. Ship back forceps to the lab for the in-depth chemical sampling for residual soil. TOSI's are also included for immediate results and for implementation of a regular verification program that correlates with this annual testing procedure.

Comply with AORN & AAMI Guidelines for Comprehensive Weekly Testing with ProFormance™ Washer Test Kits

New guidelines from AORN (Recommended Practices for Cleaning and Care of Surgical Instruments and Powered Equipment, Section XXII.a) and AAMI (ST79:A2:2009 Comprehensive Guide to Steam Sterilization and Sterility Assurance in Health Care Facilities) call for weekly testing of the automated instrument washer. Our Weekly Washer Test Kits are the comprehensive solution. These kits include tests to measure water temperature, water quality, cleaning efficiency, and directly test residual soil left on instruments, all parameters cited by AAMI and AORN as crucial for the routine testing of instrument reprocessing.

3 Level Washer Instrument Rack Kit

QTY TEST

- 2 **AquaTest™**
- 1 **TempaChek™-90**
- 3 **TempaChek™-170**
- 3 **TOSI®**

4 Level Washer Instrument Rack Kit

QTY TEST

- 2 **AquaTest™**
- 1 **TempaChek™-90**
- 4 **TempaChek™-170**
- 4 **TOSI®**

Tunnel Washer Kit

QTY TEST

- 2 **AquaTest™**
- 1 **TempaChek™-90**
- 1 **TempaChek™-170**
- 1 **SonoCheck™**
- 1 **TOSI®**

Ultrasonic Cleaner Kit

QTY TEST

- 2 **AquaTest™**
- 3 **SonoCheck™**
- 1 **TOSI®**
- 1 **TempaChek™- LC**