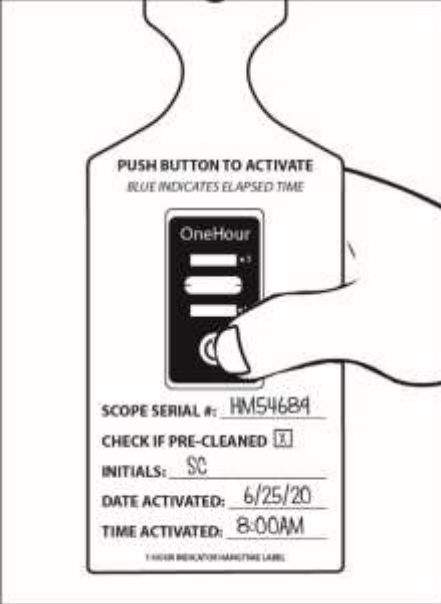

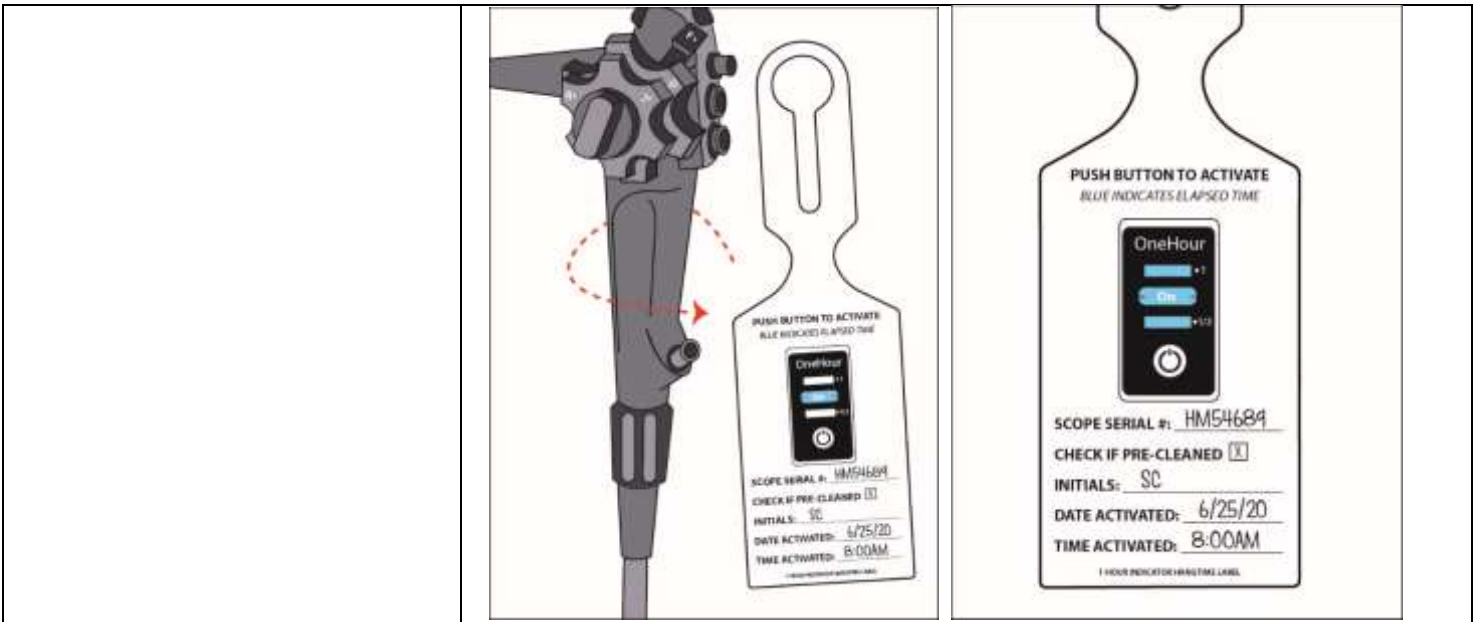


## Instructions for Use: Single-Use 1 Hour Indicator

<b>Brand Name of Product</b>	Single-Use 1 Hour Indicator
<b>Generic Name of Product</b>	1 Hour Indicator
<b>Product Code Number(s)</b>	HTK-1H2
<b>Intended Use</b>	To monitor elapsed time and whether predefined elapsed time has been reached.
<b>Range of Applications for Product</b>	N/A
<b>Key Specifications of Product</b>	<ol style="list-style-type: none"> <li>1-hour run-time.</li> <li>Push button activation on top of strip.</li> <li>Non-toxic, latex-free, silicone free and PVC free.</li> <li>Adhesive is pressure sensitive (-40°C to 110°C).</li> <li>The 1-Hour timeline after activation has begun has an accuracy of +/-10%.</li> </ol>

Shipping & Storage	
<b>Shipping Conditions &amp; Requirements</b>	N/A
<b>Storage Conditions</b>	Store in cool, dark environment at room temperature.
<b>Packaging Contents</b>	N/A
<b>Shelf Life</b>	3 years from date of manufacture.

Instructions for Using Product	
<b>Description of Use(s)</b>	To indicate that one-hour time has elapsed.
<b>Preparation for Use</b>	N/A
<b>Diagrams (drawings, pictures)</b>	<div style="display: flex; justify-content: space-around;"> <div style="text-align: center;">  <p><b>Figure 1</b></p> </div> <div style="text-align: center;">  <p><b>Figure 2</b></p> </div> </div>



**Figure 3**

**Figure 4**

<b>Steps for Use of Product</b>	<ol style="list-style-type: none"> <li>1. Fill in the information on the designated lines (i.e., Scope Serial #, Check box If Pre-Cleaned, Initials, Date Activated, Time Activated.). Then, firmly squeeze the button to activate the indicator with your thumb ensuring the button has fully collapsed (if activation line does not appear within 2 minutes, re-squeeze the button). <b>(Fig. 1)</b></li> <li>2. When “On” appears in the blue activation line, the indicator has begun logging time. <b>(Fig. 2)</b></li> <li>3. Loop the self-looping label to the device. <b>(Fig. 3)</b></li> <li>4. The blue dye will continue to progress to show the ½ hour mark and 1-hour mark elapsed time has been reached. <b>(Fig. 4)</b>. If reprocessing has been delayed beyond the allotted time indicated on the indicator, follow the manufacturer’s policy for delayed reprocessing of the item.</li> </ol>
<b>Interpretation of Results</b>	Failure to adequately squeeze can slow the progression of the time indicator.
<b>Contraindications of Test Results</b>	N/A
<b>Documentation</b>	N/A
<b>Special Warnings and Cautions</b>	For indoor use only. Not for use outdoors or in high or low temperature conditions.
<b>Disposal</b>	Single-use. Dispose of in compliance with facility policy.

<b>Reprocessing Instructions</b>	
<b>Point of Use</b>	N/A
<b>Preparation for Decontamination</b>	N/A
<b>Disassembly Instructions</b>	N/A
<b>Cleaning – Manual</b>	N/A
<b>Cleaning – Automated</b>	N/A
<b>Disinfection</b>	N/A
<b>Drying</b>	N/A
<b>Maintenance, Inspection, and Testing</b>	N/A
<b>Reassembly Instructions</b>	N/A
<b>Packaging</b>	N/A
<b>Sterilization</b>	N/A
<b>Storage</b>	N/A
<b>Additional Information</b>	<ul style="list-style-type: none"> <li>• Single use.</li> <li>• The 1-Hour timeline after activation has begun has an accuracy of +/- 10%.</li> </ul>
<b>Related Healthmark Products</b>	N/A
<b>Other Product Support Documents</b>	Labeling Brochure, Labeling Price List
<b>Reference Documents</b>	N/A
<b>Customer Service Contact</b>	Healthmark Industries Company, Inc.

	18600 Malyn Blvd. Fraser, MI 48026 1-586-774-7600 <a href="mailto:healthmark@hmark.com">healthmark@hmark.com</a> <a href="http://hmark.com">hmark.com</a>
--	---

2021-06-09 Suzanne Latta