



Instructions for Use: Single-Use 1 Hour Indicator

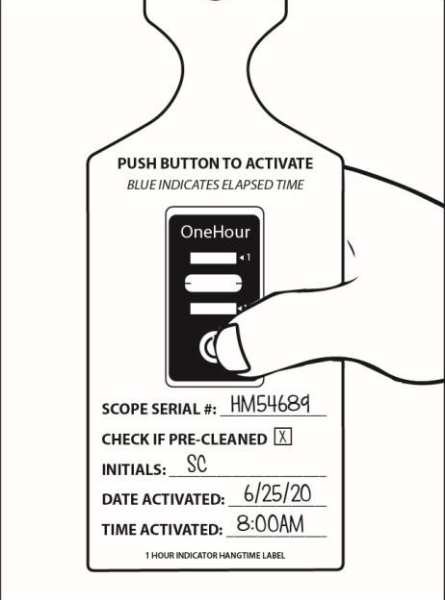
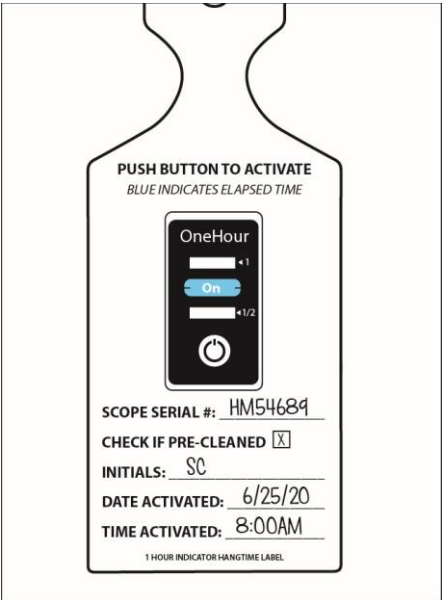
Brand Name of Product	Single-Use 1 Hour Indicator
Generic Name of Product	1 Hour Indicator
Product Code Number(s)	HTK-1H2
Intended Use	To monitor elapsed time and whether predefined elapsed time has been reached.
Range of Applications for Product	
Key Specifications of Product	<ol style="list-style-type: none"> 1-hour run-time. Push button activation on top of strip. Non-toxic, latex-free, silicone free and PVC free. Adhesive is pressure sensitive (-40°C to 110°C). The 1-Hour timeline after activation has begun has an accuracy of +/-10%.

Shipping & Storage	
Shipping Conditions & Requirements	
Storage Conditions	Store in cool, dark environment at room temperature.
Packaging Contents	
Shelf Life	3 years from date of manufacture.

Instructions for Using Product

Description of Use(s)	To indicate that one-hour time has elapsed.
------------------------------	---

Preparation for Use	
----------------------------	--

Diagrams (drawings, pictures)	 <p>Figure 1</p>	 <p>Figure 2</p>
--------------------------------------	---	--

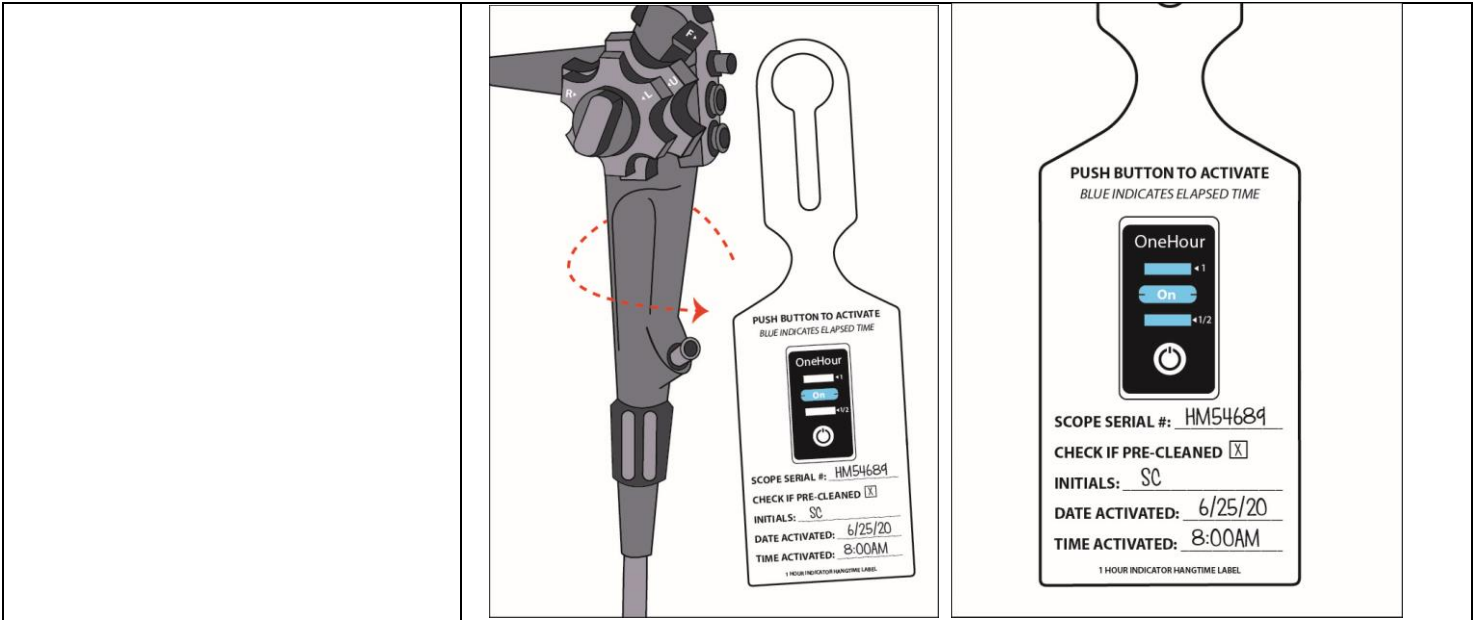


Figure 3

Figure 4

<p>Steps for Use of Product</p>	<ol style="list-style-type: none"> 1. Fill in the information on the designated lines (i.e., Scope Serial #, Check box If Pre-Cleaned, Initials, Date Activated, Time Activated.). Then, firmly squeeze the button to activate the indicator with your thumb ensuring the button has fully collapsed (if activation line does not appear within 2 minutes, re-squeeze the button). (Fig. 1) 2. When “On” appears in the blue activation line, the indicator has begun logging time. (Fig. 2) 3. Loop the self-looping label to the device. (Fig. 3) 4. The blue dye will continue to progress to show the ½ hour mark and 1-hour mark elapsed time has been reached. (Fig. 4). If reprocessing has been delayed beyond the allotted time indicated on the indicator, follow the manufacturer’s policy for delayed reprocessing of the item.
<p>Interpretation of Results</p>	<p>Failure to adequately squeeze can slow the progression of the time indicator.</p>
<p>Contraindications of Test Results</p>	
<p>Documentation</p>	
<p>Special Warnings and Cautions</p>	<p>For indoor use only. Not for use outdoors or in high or low temperature conditions.</p>
<p>Disposal</p>	<p>Single-use. Dispose of in compliance with facility policy.</p>

<p align="center">Reprocessing Instructions</p>	
<p>Point of Use</p>	
<p>Preparation for Decontamination</p>	
<p>Disassembly Instructions</p>	
<p>Cleaning – Manual</p>	
<p>Cleaning – Automated</p>	
<p>Disinfection</p>	
<p>Drying</p>	
<p>Maintenance, Inspection, and Testing</p>	
<p>Reassembly Instructions</p>	
<p>Packaging</p>	
<p>Sterilization</p>	
<p>Storage</p>	
<p>Additional Information</p>	<ul style="list-style-type: none"> • Single use. • The 1-Hour timeline after activation has begun has an accuracy of +/- 10%.
<p>Related Healthmark Products</p>	
<p>Other Product Support Documents</p>	<p>Labeling Brochure, Labeling Price List</p>
<p>Reference Documents</p>	
<p>Customer Service Contact</p>	<p>Healthmark Industries Company, Inc. 18600 Malyn Blvd. Fraser, MI 48026</p>

	1-586-774-7600 healthmark@hmark.com hmark.com
--	---

2020-11-04 Suzanne Latta