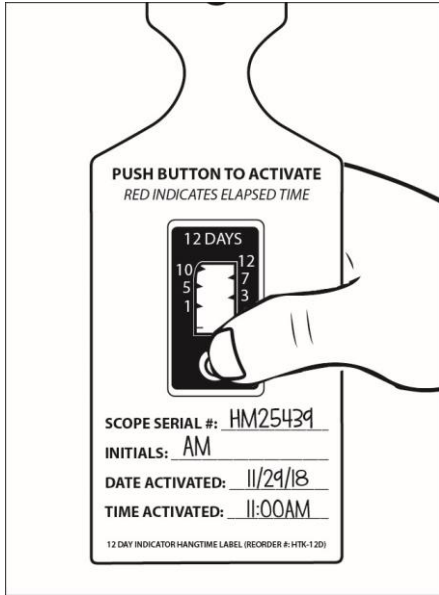
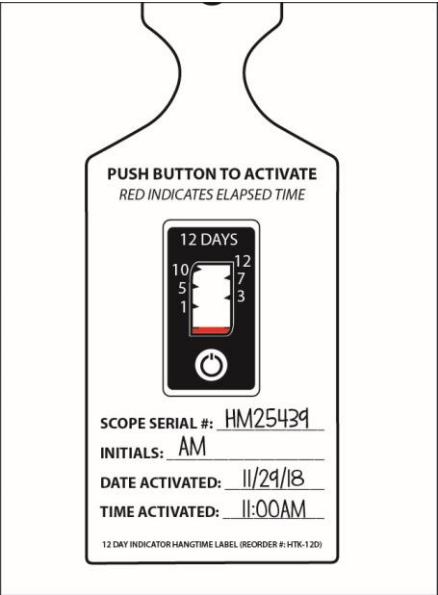


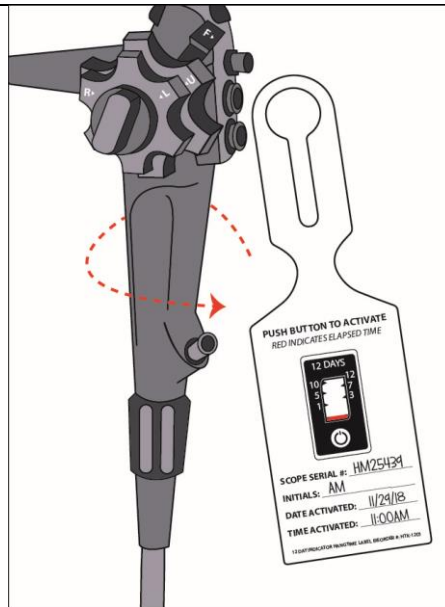


**Instructions for Use: 12 Day Indicator Hangtime Label**

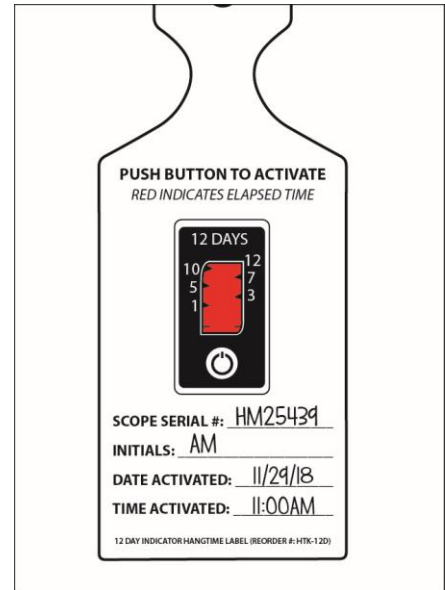
<b>Brand Name of Product</b>	12 Day Indicator Hangtime Label
<b>Generic Name of Product</b>	12 Day Indicator
<b>Product Code Number(s)</b>	HTK-12D
<b>Intended Use</b>	To monitor elapsed time and whether predefined elapsed time has been reached.
<b>Range of Applications for Product</b>	Calibrated for use at room temperature.
<b>Key Specifications of Product</b>	<ol style="list-style-type: none"> <li>12 day run-time (1, 3, 5, 7, 10 &amp; 12 days indicated).</li> <li>Push button activation on top of strip.</li> <li>Non-toxic, latex, silicone and PVC free.</li> <li>The 12 day timeline after activation has begun has an accuracy of +/-10%.</li> </ol>

<b>Shipping &amp; Storage</b>	
<b>Shipping Conditions &amp; Requirements</b>	
<b>Storage Conditions</b>	Store in cool dark environment, room temperature.
<b>Packaging Contents</b>	
<b>Shelf Life</b>	

<b>Instructions for Using Product</b>	
<b>Description of Use(s)</b>	To keep track of days after processing.
<b>Preparation for Use</b>	
<b>Diagrams (drawings, pictures)</b>	<div style="display: flex; justify-content: space-around;"> <div style="text-align: center;">  <p><b>Figure 1</b></p> </div> <div style="text-align: center;">  <p><b>Figure 2</b></p> </div> </div>



**Figure 3**



**Figure 4**

<b>Steps for Use of Product</b>	<ol style="list-style-type: none"> <li>1. Fill in the information on the designated lines (i.e., date, name of processor, etc.). Then, firmly squeeze the button to activate the indicator with your thumb ensuring the button has fully collapsed (if activation line does not appear within 2 minutes, re-squeeze the button). <b>Fig. 1</b></li> <li>2. When the red activation line appears, the indicator has begun logging time. <b>Fig. 2</b></li> <li>3. Loop the self-looping label to the device. <b>Fig. 3</b></li> <li>4. The red dye will continue to progress until the maximum elapsed time has been reached. <b>Fig. 4</b> If the scope has surpassed the allotted time indicated of the Hangtime tag, follow the facility's policy for reprocessing the endoscope.</li> </ol>
<b>Interpretation of Test Results</b>	
<b>Contraindications of Test Results</b>	Failure to adequately squeeze can extend or delay the time for indication.
<b>Documentation</b>	
<b>Special Warnings and Cautions</b>	For indoor use only. Not for use outdoors or high or low temperature conditions, such as a refrigerator.
<b>Disposal</b>	Single-use. Dispose of in compliance with facility policy.

<b>Reprocessing Instructions</b>	
<b>Point of Use</b>	
<b>Preparation for Decontamination</b>	
<b>Disassembly Instructions</b>	
<b>Cleaning – Manual</b>	
<b>Cleaning – Automated</b>	
<b>Disinfection</b>	
<b>Drying</b>	
<b>Maintenance, Inspection, and Testing</b>	
<b>Reassembly Instructions</b>	
<b>Packaging</b>	
<b>Sterilization</b>	
<b>Storage</b>	
<b>Additional Information</b>	Single-use per device. The 12 day timeline after activation has begun has an accuracy of +/- 10%.
<b>Related Healthmark Products</b>	
<b>Other Product Support Documents</b>	Labeling Brochure, Labeling Price List
<b>Reference Documents</b>	
<b>Customer Service Contact</b>	Healthmark Industries Company, Inc.

	18600 Malyn Blvd. Fraser, MI 48026 1-586-774-7600 <a href="mailto:healthmark@hmark.com">healthmark@hmark.com</a> <a href="http://hmark.com">hmark.com</a>
--	---

2020-09-18 Suzanne Latta