

<b>Brand Name of Product</b>	TempaChek-DL™
<b>Generic Name of Product</b>	TempaChek-DL
<b>Product Code Number(s)</b>	TCDL2
<b>Purpose of Product</b>	The TempaChek-DL™ is a thermologger capable of measuring the water temperature through the cycle.
<b>Range of Applications for Product</b>	To track temperature in a specific environment.
<b>Key specifications of product</b>	<ul style="list-style-type: none"> <li>TempaChek-DL™ is a data logger that measures and stores up to 32,510 temperature readings over a -40 to +125°C (-40 to +257°F) range.</li> <li>You can easily set up the logging rate and start-time, and download the stored data by plugging the data logger into a PC's USB port and running the purpose designed software under Windows 2000, XP (Home and Professional Editions), Vista and 7. Logged data can then be graphed, printed and exported to other applications such as spreadsheets and reports.</li> <li>The data logger is supplied complete with a long-life, replaceable lithium battery, which can typically allow logging for two years.</li> <li>The data logger is protected against moisture to IP 67 standard using two o-rings.</li> </ul>



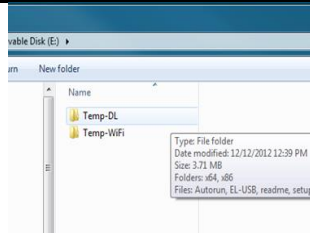
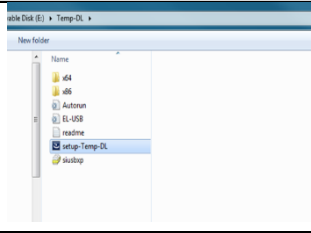
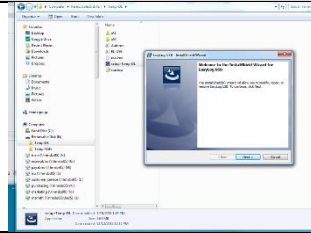
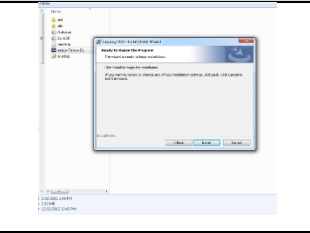
### Shipping & Storage

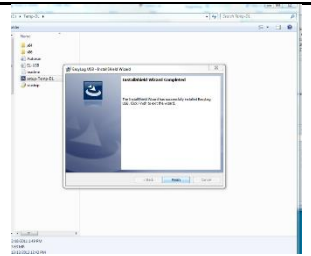
<b>Shipping Conditions &amp; Requirements</b>	
<b>Storage Conditions</b>	
<b>Packaging Conditions</b>	
<b>Shelf Life</b>	

### Instructions for Using Product

<b>Description of Use (s)</b>	The TempaChek-DL™ is a professional measuring instrument, designed to record temperature.
<b>Preparation for Use</b>	<ol style="list-style-type: none"> <li>Using a screwdriver or coin, unscrew the flat end of the logger by turning anti-clockwise.</li> <li>Install the battery in the TempaChek-DL™, with the positive terminal going in first.</li> <li>Using a screwdriver or coin, replace the flat end of the logger by turning clockwise.</li> </ol> <p>For product support please call 800-521-6224 ext. 6657 or email hmit@hmark.com to schedule a call between your IT department and the Healthmark Help Desk.</p>

### Diagrams (drawings, pictures):

			
	1	2	3
			
	4	5	6



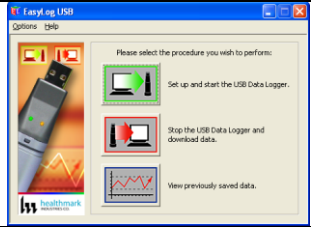
7



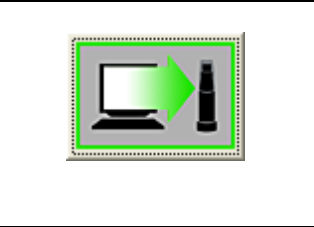
8



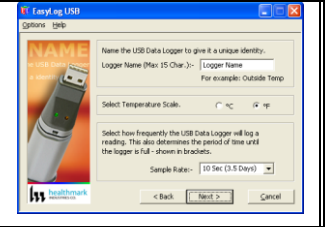
9



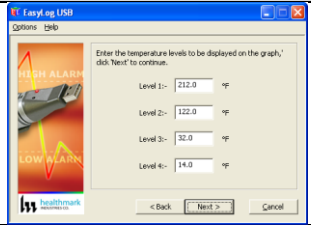
10



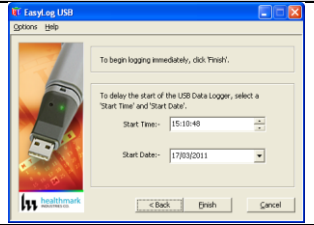
11



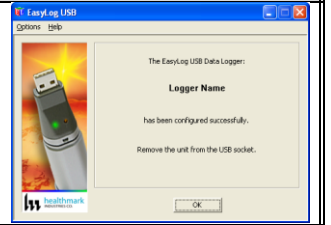
12



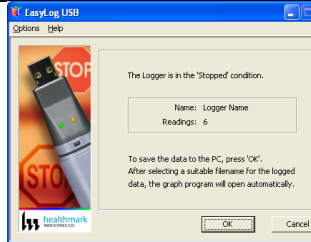
13



14



15



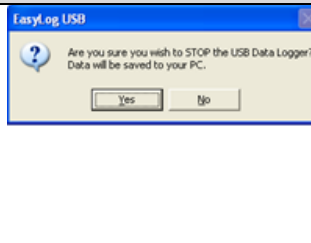
16



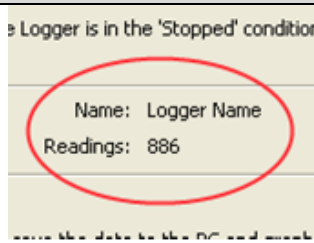
17



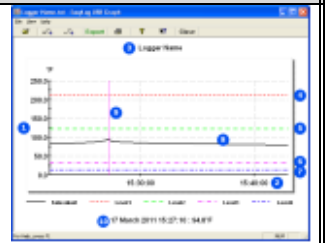
18



19



20



20a

<p><b>Steps for Use of Product</b></p>	<ol style="list-style-type: none"> <li>1. Insert software flash drive into USB port on your computer.</li> <li>2. Select “Open folder to view files”.</li> <li>3. Next select folder “Temp-DL”.</li> <li>4. Then select the icon that reads, “Set up Temp DL”.</li> <li>5. Install window will be prompt open, click “Install”.</li> <li>6. Then click “Next”.</li> <li>7. When installation is finished, select “Finished” when window is prompted open.</li> <li>8. Unscrew cap of the TempaChek-DL™ Datalogger.</li> <li>9. Insert the TempaChek-DL into a free USB port on your computer.</li> <li>10. The computer will automatically detect the presence of the TempaChek-DL™ and start the hardware installation process.</li> <li>11. Double-click the EasyLog USB icon on your desktop to launch the control software. You will be presented with three options on the Main Screen.</li> <li>12. Click on the green button to set up and start the TempaChek-DL™ Data Logger and follow the setup procedure:</li> <li>13. USB Data Logger Name, Temperature Scale and Sample Rate: - enter the Logger Name, - select the Temperature Scale, - select the Sample Rate, - then click “Next”. <ol style="list-style-type: none"> <li>a. Note: If you are using this Data Logger for the first time, then it may contain some sample data, in which case you will receive a warning message. Click “OK” to continue.</li> </ol> </li> <li>14. Logger Options: - select whether the logger should stop saving data when full or begin overwriting the oldest data. Then click “Next”.</li> <li>15. Setting alarm levels for the USB Data Logger: - select the Alarms, if required, - select the Alarm Trigger Levels for any selected alarms, - select Hold for any selected alarms, - then click “Next”.</li> <li>16. Setting the start time and date: - either click Finish if you want to start logging immediately or - select the Start Time and Start Date for logging to commence, and then click “Finish”. The summary screen will now appear.</li> <li>17. Remove the TempaChek-DL™ from the computer and place it in the location where you want to measure temperature. <ol style="list-style-type: none"> <li>a. Note: If you leave the TempaChek-DL™ connected to your PC, the Data Logger will operate at an elevated temperature, due to a self-heating effect. This will cause the Data Logger to record erroneous temperature readings. If the Data Logger is connected to the USB port for a long time (e.g. 15 minutes), then you should allow time for the Data Logger to cool down after disconnecting it from the USB port.</li> </ol> </li> <li>18. Click on the “red” button to stop the datalogger and download and stored data. <ol style="list-style-type: none"> <li>a. You will be asked to confirm that you wish to stop the USB Data logger, click “yes”.</li> </ol> </li> <li>19. A window will pop up to show that the Data Logger has stopped. It will also display the name and amount of readings stored.</li> <li>20. Save the file under a suitable file name. <ol style="list-style-type: none"> <li>a. The data will remain in the logger’s memory until it has been set up again.</li> </ol> </li> </ol>
<p><b>Interpretation of Results</b></p>	
<p><b>Contraindications of Test Results</b></p>	
<p><b>Documentation</b></p>	
<p><b>Special Warnings and Cautions</b></p>	<ul style="list-style-type: none"> <li>• When the TempaChek-DL™ is connected to the USB port, the battery inside the Data Logger is discharged at a higher rate than normal. To conserve battery life, do not leave the TempaChek-DL™ connected to the USB port for a prolonged period of time.</li> <li>• The TempaChek-DL™ is a professional measuring instrument, designed to record TEMPERATURE. Care must be taken when: <ul style="list-style-type: none"> <li>○ 1. Removing the logger from extreme environment- The logger is metal and will retain heat or will remain cold when it has been removed from the environment under measurement. Personal protection, such as suitable heat resistant gloves or tools must be used to remove the logger from any environment. See data sheet for maximum and minimum temperatures that the logger can be used in.</li> <li>○ 2. Replacing batteries- Always operate TempaChek-DL™ and replace its batteries according to the instructions.</li> </ul> </li> </ul>

	<ul style="list-style-type: none"> <li>• The TempaChek-DL™ will work in extreme temperatures. However, many batteries will not work at these extremes. Always ensure the specific battery as detailed by Healthmark is used. Serious injury can occur if the incorrect battery is used.</li> <li>• TempaChek-DL™ is not authorized for use as a critical component in life support devices or systems.</li> </ul>
<b>Disposal</b>	

<b>Reprocessing Instructions</b>	
<b>Point of use:</b>	
<b>Preparation for decontamination:</b>	
<b>Disassembly Instructions:</b>	
<b>Cleaning – Manual:</b>	
<b>Cleaning – Automated:</b>	
<b>Disinfection:</b>	
<b>Drying:</b>	
<b>Maintenance, inspection, and testing:</b>	
<b>Reassembly Instructions:</b>	
<b>Packaging:</b>	
<b>Sterilization:</b>	
<b>Storage:</b>	
<b>Additional Information:</b>	

<b>Related Healthmark Products</b>	
<b>Other Product Support Documents</b>	For more information go to “Help” file contents on the software installation flash drive.
<b>Reference Documents</b>	Proformance Brochure, Proformance Price List
<b>Customer Service contact:</b>	Healthmark Industries Company, Inc 33671 Doreka Fraser, MI 48026 1-586-774-7600 <a href="mailto:healthmark@hmark.com">healthmark@hmark.com</a> hmark.com

2017-12-21 Suzanne Latta