
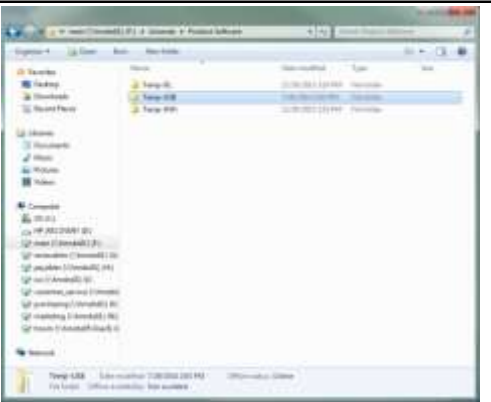

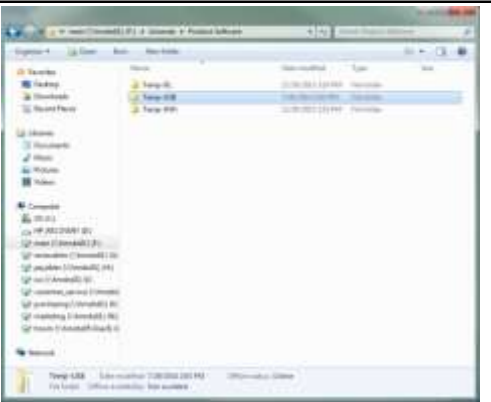

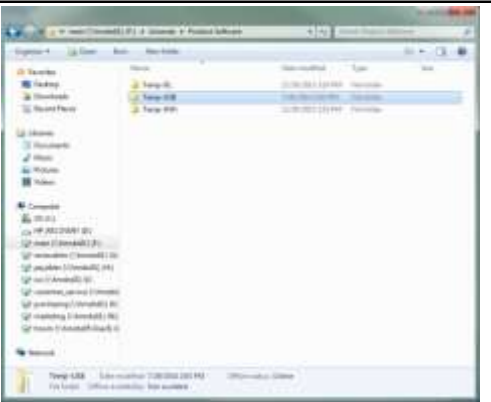
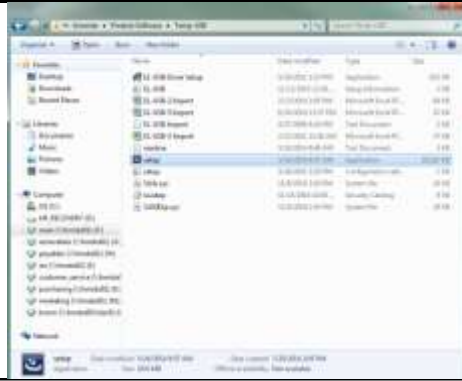


Instructions for Use: Temp-USB-TP and Temp-USB-TH

Brand Name of Product	Temp-USB-TP, Temp-USB-TH
Generic Name of Product	USB Humidity and/or Temperature Data Logger
Product Code Number(s)	Temp-USB-TP and Temp-USB-TH
Purpose of Product	<p>These data loggers are perfect for department rooms where humidity and/or temperature monitoring is crucial.</p> <ul style="list-style-type: none"> • The TEMP-USB-TH measures over 250,000 temperatures and humidity readings ranging from -22 to 176°F and 0 to 100% relative humidity. • The TEMP-USB-TP offers solely temperature readings but has the advantage of dual temperature probes which can gather over 250,000 readings (-40 to 257°F_ via two separate probes. With use of the probes, can be measure the temperature of liquid solutions, warming cabinets, refrigerators, etc. – anywhere remote temperature monitoring is required.
Range of Applications for Product	Any area that requires humidity and/or temperature monitoring, including decontamination, sterile storage, sterile packing, etc.
Key Specifications of Product	<ul style="list-style-type: none"> • Data Logger • USB Cover • Mounting Clip • Micro USB Cable • 2x ½ AA Batteries

Shipping & Storage	
Shipping Conditions & Requirements	
Storage Conditions	
Packaging Contents	
Shelf Life	

Instructions for Using Product							
Description of Use (s)	The Temp-USB-TH device measures humidity and temperature of the environment in which it's situated. The Temp-USB-TP measures the temperature of the environment in which the dual probes are placed, including in liquid solutions, warming cabinets, refrigerators, etc.						
Preparation for Use							
Diagrams (drawings, pictures):	<p>USE THESE PICTURES ALONG WITH THE NUMBERED STEPS BELOW FOR ACCURATE SET-UP.</p> <table border="1"> <tr> <td style="text-align: center;">1</td> <td style="text-align: center;">2</td> </tr> <tr> <td></td> <td></td> </tr> <tr> <td style="text-align: center;">3</td> <td style="text-align: center;">4</td> </tr> </table>	1	2			3	4
1	2						
							
3	4						



5



6



7



8



9



10



11



12



13



14



15



16



17



18



19



20



21



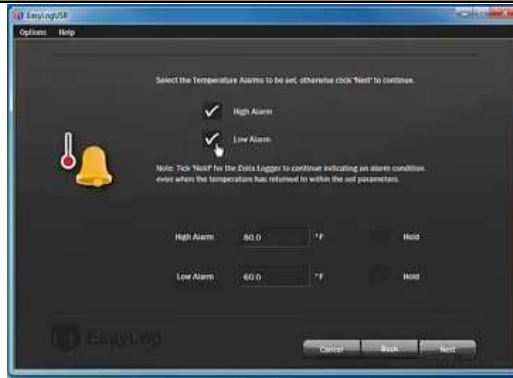
22



23



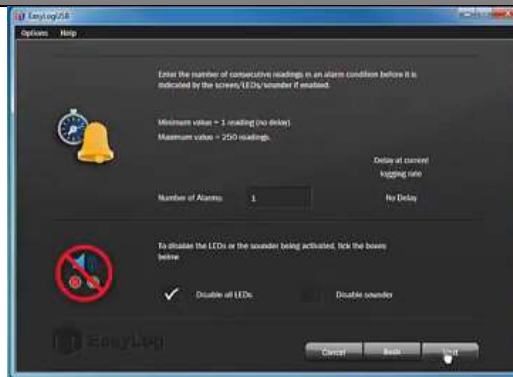
24



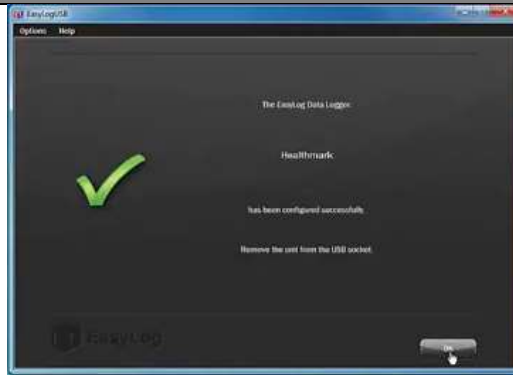
25



26



27



Steps for Use of Product

- 1) The begin installation, plug the provided USB/jump drive labeled “Temp Soft 2.0” into a computer USB port.
- 2) Open the “Temp-USB folder.”
- 3) Click on the blue icon file labeled “setup.”
- 4) An installation screen will appear.
- 5) When it is finished loading, click “next.”
- 6) Read the licensing agreement and click “I accept the terms in the license agreement” and then click “next.”
- 7) Now you will be prompted to begin installation, click “Install.”
- 8) If successful, when installation is complete, click “finish.”

	<p>9) Next you will be asked to install the USB Easy Log Device driver. Click “Install.”</p> <p>10) Once installation is complete, click “OK.”</p> <p>11) You are now ready to install the batteries. Your Temp-USB Data Logger is supplied with two batteries.</p> <p>12) To connect batteries, pull and remove the plastic clip located at the joint between the top and the bottom housing.</p> <p>13) Remove both screws to install the batteries.</p> <p>14) Tighten both screws once the batteries are installed to ensure a waterproof seal between the housings.</p> <p>15) Place the clip back onto the housings.</p> <p>16) Batteries are properly installed when the device turns on.</p> <p>17) Next, remove the clip labeling “USB.”</p> <p>18) Connect the data logger to an available USB port.</p> <p>19) Click on the “EasyLog USB” icon on your desktop.</p> <p>20) Now, to set up your Temp-USB, click “Set up and start the USB data logger.” A warning message may appear that explains that data that has not been downloaded may be lost. Click “OK.”</p> <p>21) Name your device. Next, select your temperature scale (degrees Celsius or degrees Fahrenheit). Next, select how frequently you would like your data logger to log your data. Click “Next.”</p> <p>22) Select how you would like to display your functions. Next, select the desired level of security for the device. Click “Next.”</p> <p>23) Select the desired temperature alarms. Click “Next.”</p> <p>24) Select the desired humidity alarms. Click “Next.”</p> <p>25) Enter the number of consecutive readings in an alarm condition for it is indicated by the screen if enabled. To disable the LEDs or the sound being activated, click either box below. Click “Next.”</p> <p>26) Select when you would like the logger to start. Click “Finish.”</p> <p>27) When the set-up is complete, the data logger should be disconnected from the USB port to begin recording.</p> <p>For Product support please call 800-521-6224 ext:6657 or e-mail hmit@hmark.com to schedule a call between your IT Department and the Healthmark Help Desk.</p>
Interpretation of Results	
Contraindications of Test Results	
Documentation	To view the TEMP USB installation video, go to: https://www.youtube.com/watch?v=pvBuscM5Mk4
Special Warnings and Cautions	<ul style="list-style-type: none"> • Prolonged use of LCD and backlight may reduce battery life. • LCD response time may slow down at low temperatures. • Display will be disabled at temperatures lower than -20°C.
Disposal	

Reprocessing Instructions	
Point of Use	
Preparation for Decontamination	
Disassembly Instructions	
Cleaning – Manual	
Cleaning – Automated	
Disinfection	
Drying	
Maintenance, Inspection, and Testing	
Reassembly Instructions	
Packaging	
Sterilization	
Storage	

Additional Information	
Related Healthmark Products	
Other Product Support Documents	ProFormance Price List, ProFormance Brochure
Reference Documents	
Customer Service Contact	Healthmark Industries Company, Inc 18600 Malyn Blvd. Fraser, MI 48026 1-586-774-7600 healthmark@hmark.com hmark.com

troom