



For more information about ProFormance™ products and verification of the cleaning process, call 800-521-6224 or visit HMARK.com

Make Clean Seen™



healthmark
INDUSTRIES CO.
health care products

800-521-6224
www.hmark.com

AWT-GUIDE: 01/2010

Instruction Guide for Automated Washer Testing



How to Use this Booklet

- 1 Determine the test or test kit you are using.
- 2 If you are using a kit, identify each individual test in the kit.
- 3 Read and follow the instructions for each test to be used.
- 4 Perform equipment inspection as specified on the log sheet.
- 5 Record results on the log sheet.
- 6 Immediately report any test failure to department management.

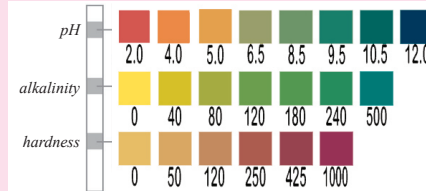
1

AquaTest™

Reorder# AT101

Follow these directions first for Cold, then Hot Water:

- 1 Dip entire strip into water for 5 seconds, then remove.
- 2 Shake once briskly to remove excess water from the test strip.
- 3 Wait 20 seconds.
- 4 Compare color within 10 seconds to pH, TOTAL ALKALINITY, TOTAL HARDNESS on the interpretation chart.
- 5 Record results on log sheet.
- 6 Report any deviations from expected values.

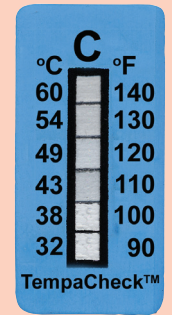


2

TempaChek™-90

Reorder# Temp-90

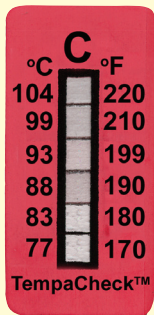
- 1 Use one (1) TempaChek™-90 per washer.
- 2 Peel thermometer from release paper.
- 3 Apply to any clean, dry surface ensuring that the indicator has adhered to the surface.
- 4 TempaChek™-90 should be read during the Cold Water Rinse stage.
- 5 Record results on log sheet.
- 6 Temperature should not exceed 100°F. Immediately report any result that exceeds this temperature.



3 TempaChek™-170

Reorder# Temp-170

- 1 Use one TempaChek™-170 on each level of the Instrument Rack.
- 2 Peel thermometer from release paper.
- 3 Apply to any clean, dry surface ensuring that the indicator has adhered to the surface.
- 4 TempaChek™-170 should be read after the Thermal Disinfection stage and before the Drying stage.
- 5 Record results on log sheet.
- 6 Report any deviation from targeted temperature.

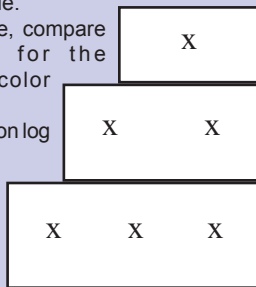


4 SonoCheck™

Reorder# TI-108

If the washer has an ultrasonic bath...

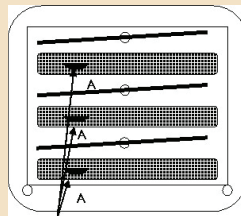
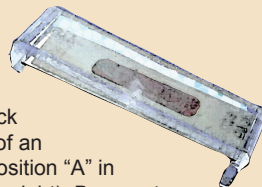
- 1 Confirm that the ultrasonic runs a degas cycle.
- 2 Place a single SonoCheck™ in the basket without instruments.
- 3 Run washer with ultrasonic through an instrument cycle.
- 4 At end of cycle, compare SonoCheck for the appropriate color change.
- 5 Record results on log sheet.
- 6 Report if color indicates a failed test.



5 TOSI®

Reorder# WT-101

- 1 Secure one (1) TOSI® per level of the instrument rack in the center of an empty tray (position "A" in the diagram to right). Be sure to run tests in an otherwise empty washer.
- 2 Process using the "instrument" wash cycle.
- 3 Compare the test to the Interpretation Guide.
- 4 Record results on log sheet.
- 5 If less than optimal results are obtained (1-5) immediately report results.



6 Log Sheet

Reorder#s

Equipment
3 level
4 level
Tunnel
TOSI Only

Order #
AWTK-3L
AWTK-4L
TWTK-1L
WTK-3L

- 1 Be sure to conduct complete inspection of the washer following the questions on the log sheet.
- 2 Fill out the appropriate log sheet for your washer (supplied with the test kit).
- 3 Immediately report failure of any test to your manager.
- 4 Place log sheet in appropriate binder or file for future reference.

